

**OPTION B**  
**Pebbles**

Our base luxury patio home boasts 2,700 square feet and is akin to our Bam Bam unit with a few slight differences in layout. In our slab layout, the bonus room provides ample space for all your storage needs.

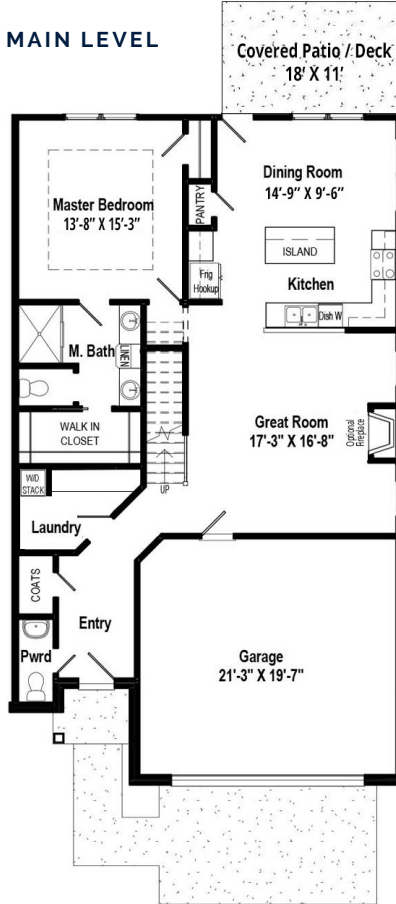
\*Basement version available to be tailored to your needs. See back of this sheet for details.

**SIZE:**  
**2,700 Sq Ft**

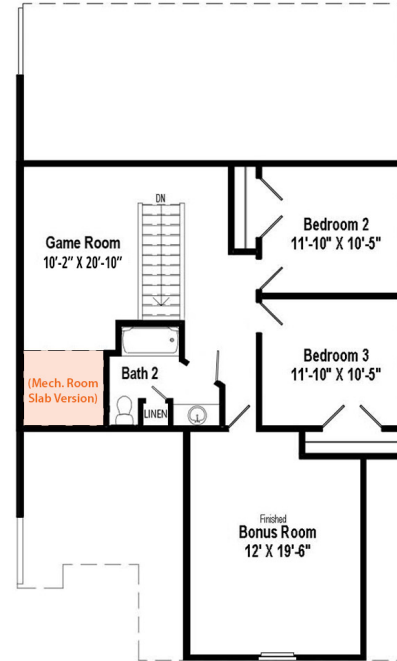
\*Room measurements are approximate with final dimensions determined upon build.



**MAIN LEVEL**



**UPPER LEVEL**



**OPTION B**

# Pebbles

## Basement Layout

\* Choose from our constructed designs, including the one shown here, of our finished, daylighted lower level that best fits your needs and desires. We can modify the space to add a game room, bar, fitness center, and even an extra bedroom! We make simple living feel extravagant with these additional spaces.

**SIZE WITH BASEMENT:**

≈3,850 Sq Ft

\*Room measurements are approximate with final dimensions determined upon build.



### LOWER LEVEL

